

STRATHCLYDE
FIRE & RESCUE



making our communities safe places to live, work and visit

east renfrewshire strategic assessment

December 2008

foreword

On behalf of the Board of Strathclyde Fire & Rescue, I am both pleased and proud to deliver this fire and rescue Strategic Assessment for the East Renfrewshire authority area. It is the intention that this assessment will inform internal resource allocation and service planning whilst assisting our community planning partners to identify opportunities for joint working towards common objectives.



Through strategic analysis and single outcome agreements with local authorities, the Scottish Government is placing enhanced commitment on outcome based priorities and activities. We recognise the benefits of such focus and aim to be proactive in working with partners towards the achievement of national strategic objectives through single outcome agreements. This strategic assessment is intended to support local authorities community improvement and development plans by describing Strathclyde Fire & Rescue activities and highlighting areas where we might more actively contribute to partnership working initiatives.

This assessment provides our community planning partners with analysis of current and emerging trends in fire and rescue service activities. It places particular emphasis on those trends that have the greatest impact on community safety, many of which are closely linked with the social issues that are being addressed by our partner organisations' respective planning processes.

Brian Wallace

Brian Wallace
Convener – Strathclyde Fire Board

This strategic assessment provides an analytical picture of Strathclyde Fire & Rescue's emergency response service activity within East Renfrewshire. It will inform managerial decisions on the allocation and targeting of resources towards areas where they will deliver the greatest benefit in terms of community risk reduction as well as ensure that resources are used effectively. It is hoped that this information will assist other organisations working with the community by identifying common areas of activity where joint initiatives might be undertaken.



We undertake to update this document on an annual basis, applying analysis of the previous 5 fiscal years of incident data and delivering the document by the end of December in each year.

I commend this document to you in the hope that it will prove to be of assistance in developing an integrated approach towards the improvement of safety and well-being within our communities.

Brian Sweeney

Brian Sweeney QFSM, D.Univ., MA
Chief Officer – Strathclyde Fire & Rescue

The maps in this document are reproduced from Ordnance Survey material with the permission of Ordnance Survey on behalf of the Controller of Her Majesty's Stationery Office © Crown copyright. Unauthorised reproduction infringes Crown copyright and may lead to prosecution or civil proceedings. (100020803) (2008)

FOREWORD	i
STRATEGIC DIRECTION	1
Strathclyde Fire & Rescue priorities	1
Local priorities	2
FIRE BOARD MEMBERSHIP	3
SFR OVERVIEW	4
EAST RENFREWSHIRE AREA PROFILE	5
Operational profile	6
Casualties, fatalities & rescues	7
FIRE	10
Fires in the home	10
Fires in other buildings	13
Fire Safety enforcement	14
ANTI-SOCIAL BEHAVIOUR	16
Refuse fires	17
Grass and heath fires	18
Derelict building fires	19
Deliberate vehicle fires	20
Deliberate primary fires	21
Malicious false alarms	22
Acts of violence against firefighters	23
COMMUNITY SAFETY	24
Community safety in our schools	24
Community safety in our communities	26
ROAD SAFETY	27
Road traffic collisions	27
Community safety on our roads	28
UNWANTED FIRE ALARM SIGNALS	29
OTHER INCIDENTS	30
False alarm - good intent	30
Chimney fires	30
Special services	31
ECONOMIC COST TO SOCIETY OF FIRE INCIDENTS	32
SFR CAPABILITY	33
Local, regional and Scottish resilience	33
New Dimensions	33
Water rescue capability	35
Maritime incident response	35
Incident, Research and Investigation Section (IRIS)	35
Technical support	35
Local presence	36
REFERENCE DOCUMENTS	37

Strategic direction

The Local Government in Scotland Act 2003 places a statutory duty on local authorities, fire and police authorities to work in partnership with other public bodies to improve public services to the community by delivering customer-focused outcomes. In doing so, authorities must also deliver Best Value and equality.

For fire and rescue services, 'working together' has tended to concentrate on activities that relate to the strategic objective to make communities safer and stronger, through targeted community safety activity. Primary legislation, the Fire (Scotland) Act 2005, requires fire and rescue authorities to make provision for principal and ancillary functions in the areas of firefighting, fire safety prevention and education, enforcement of fire safety legislation, fire investigation and rescue from road traffic accidents and other hazardous situations.

Whilst operating within the overall framework for Scottish local government described above, specific priorities are also set through the Scottish Fire and Rescue Framework document, which sets out Government expectations for the 8 Scottish fire and rescue services.

Strathclyde Fire & Rescue priorities

Fire is an obvious threat to public safety. It can cause death or injury and directly destroys property, which has consequential costs to individuals and society in terms of care and rebuilding or reinstatement. Fire may have wider economic impacts where businesses are affected, with higher rebuilding costs and potential loss of continued trading.

Whilst the primary objective of Strathclyde Fire & Rescue is to minimise economic and social impacts, reduce risk and improve community safety in relation to fire, the service also aims to reduce risk of death and injury from other causes such as Road Traffic Collisions or incidents involving inland waterways. Reducing the number of occasions on which our emergency services are required is key to our vision of:

'Making our communities safe places, to live, work and visit'

The allocation of appropriate resources to each service area is critical to the organisation's effectiveness and the Board of Strathclyde Fire & Rescue faces the difficult task of determining how resources will be divided between incident response services and risk reduction activities.

This determination is informed by the Integrated Risk Management Planning process, which provides a mechanism for assessing community risk and identifying where investment is likely to deliver maximum benefit. Outcomes of the planning process are documented in a 3 year Integrated Risk Management Plan and associated Annual Action Plans.

Our 7 corporate priorities help to focus service initiatives and activities on the delivery of the objectives and targets stated in Strathclyde Fire & Rescue's Vision 2015 document (available from http://www.strathclydefire.org/pdfs/ppr/Vision_2015_A5.pdf). The priorities, listed on the next page, maintain a focus on risk reduction whilst ensuring compliance with statutory obligations placed upon the service.

- *Actively identifying, assessing and reducing risk within communities*
- *Minimising the effects of fire and other emergencies*
- *Effectively administering Fire Safety Legislation*
- *Achieving fairness and equality in the treatment of all staff and service users*
- *Promoting health, safety and welfare*
- *Communicating with stakeholders to inform and seek opinion*
- *Making the best use of all resources*

The priorities are consistent with those of the Scottish Government and, we believe, the majority of those applied by other public sector organisations within the Strathclyde area. Such areas of similarity offer opportunities to explore collaboration and partnership working towards the delivery of community benefit.

Through the power to advance well-being, available to local authorities and joint boards, there is also scope to explore innovative joint working initiatives which provide services not usually associated with fire and rescue service functions.

Local priorities

Strathclyde Fire & Rescue is a core participant within local authority Community Planning Partnerships and many of their associated thematic groups, particularly the Community Safety Partnerships based throughout the 10 Strathclyde Fire & Rescue areas (see map on page 4). Depending on local needs and priorities, Strathclyde Fire & Rescue is also an active contributor within other joint working initiatives such as Community Health Partnerships, Alcohol and Drug Action Teams and Crime Prevention Partnerships.

Although aligned with national priorities, our Corporate Vision and Priorities have also been shaped by local needs. They translate into specific actions and targets via our Integrated Risk Management Plan and are delivered by our Area and Station level Service Plans, which focus on local area based priorities.

Strathclyde Fire & Rescue and its community planning partners actively collaborate to determine local priorities and to develop appropriate action plans that deal with issues such as road safety, health improvements and anti-social behaviour.

We recognise that our local authority partners are developing Single Outcome Agreements through which they commit to the achievement of specific actions that help deliver national objectives. The service recognises the role and contribution that we can make in assisting this process and in improving our communities.

It is hoped that this document provides partner agencies with an opportunity to identify where issues affecting Strathclyde Fire & Rescue link to their own. Issues relating to social inclusion, safety and anti-social behaviour are clear examples where there is already a high level of inter-agency co-operation. Much of the information contained in this assessment relates to our activity in relation to areas of operational activity, such as fire injuries or deliberate fires.

There will, however, be additional areas where partner organisations might work more closely and when considering this document it should be borne in mind that Strathclyde Fire & Rescue has some 3,500 staff, dispersed across the 113 fire stations and Service and Area Headquarters that make up the Strathclyde area. Where possible, we strive to make our material and human resources available to all communities, be they based in remote rural areas and islands or city and town centre locations.

Fire board membership



COUNCILLOR

Mary Montague

Ward 4 Netherlee, Stamperland & Williamwood

Council Offices,
Eastwood Park, Giffnock,
G46 6UG

Tel: 0141 577 3000

Email: mary.montague@eastrenfrewshire.gov.uk

Political affiliation
Scottish Labour Party



COUNCILLOR

Ralph Robertson

Ward 4 Netherlee, Stamperland & Williamwood

Council Offices,
Eastwood Park, Giffnock,
G46 6UG

Tel: 0141 577 3000

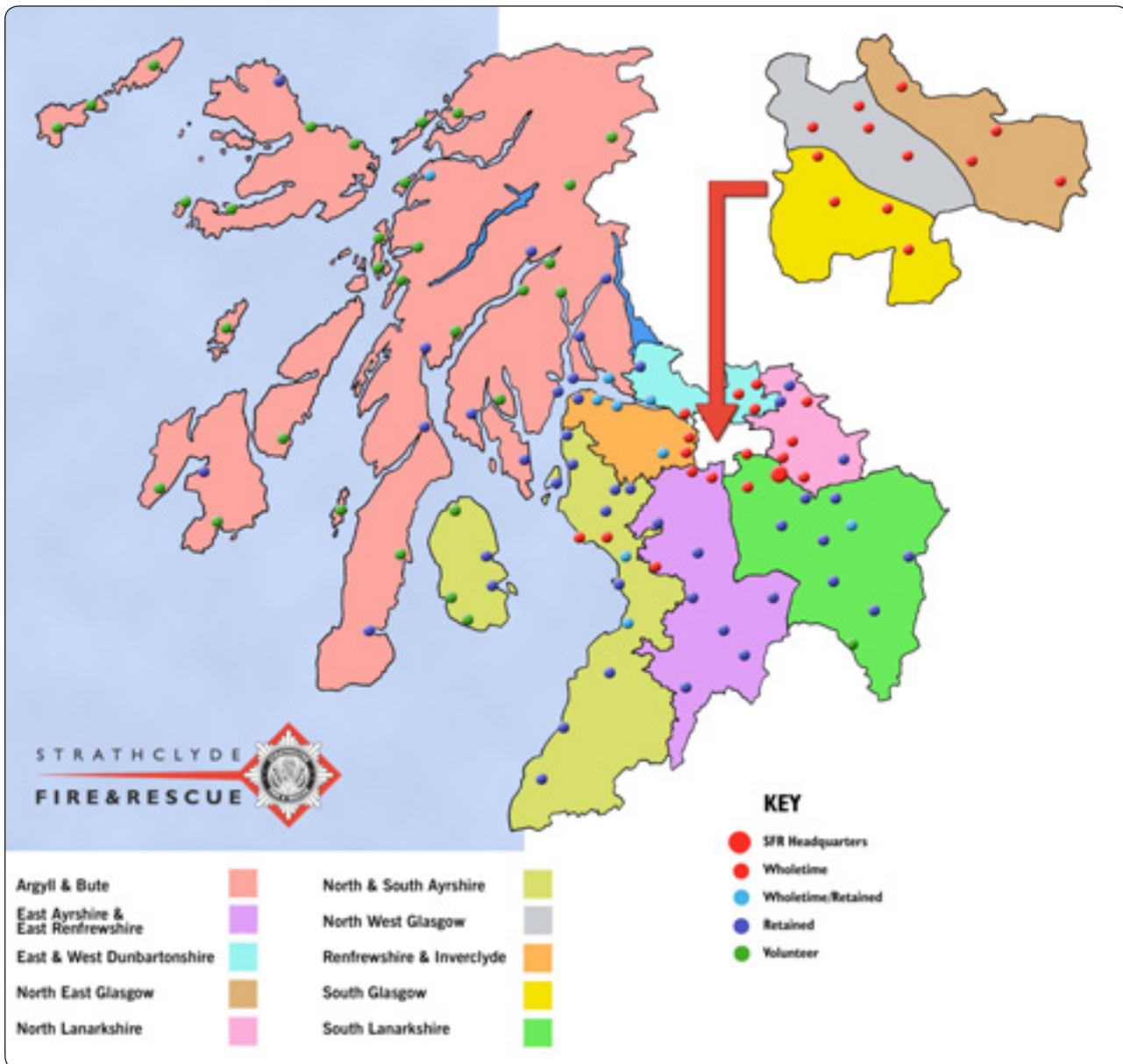
Email: ralph.robertson@eastrenfrewshire.gov.uk

Political affiliation
Independent

SFR overview

Strathclyde Fire & Rescue covers a total area of 13,625sq km. Our services meet the needs of 2.4 million people, around 46% of Scotland's total population. We operate through 113 wholetime, retained and volunteer stations based across our 10 area commands and utilise 137 appliances.

From remote rural communities to densely populated towns, our area covers 23 inhabited islands and many miles of coastline as well as Scotland's largest city, Glasgow.



East Renfrewshire area profile

East Renfrewshire is one of Scotland's smaller local authorities, with a population of just under 90,000 occupying an area of around 67 square miles. Its population has grown over recent years, against the Scottish trend of population decline. This growth is forecast to continue with a population of 98,000 predicted for 2016.

The largest towns are Clarkston and Barrhead, followed by the mainly residential enclaves of Giffnock, Newton Mearns, Thornliebank, and Busby.

Almost 75% of East Renfrewshire is rural, although the majority of the population lives in urban communities. The area has a large stock of high-quality owner occupied housing but the area also contains 'pockets' of social deprivation that are subject of regeneration and urban renewal projects.



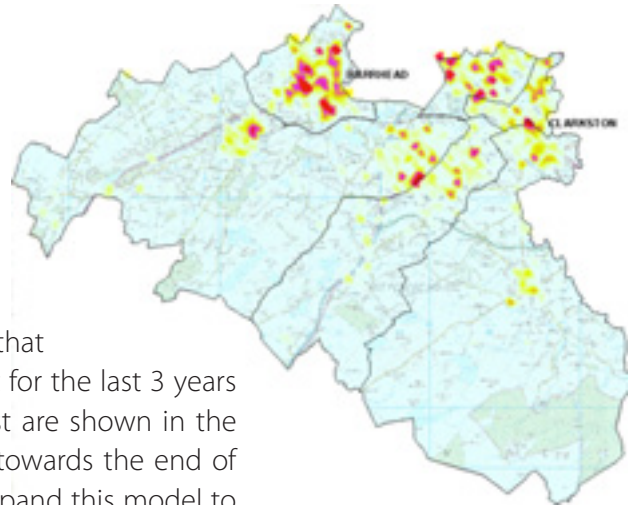
KEY
 ● Wholetime
 © Crown copyright. All rights reserved. (100020803) (2008)

Ward No.	Ward
1	Neilston, Uplawmoor and Newton Mearns
2	Barrhead
3	Giffnock and Thornliebank
4	Netherlee, Stamperland and Williamwood
5	Newton Mearns
6	Busby, Clarkston and Eaglesham

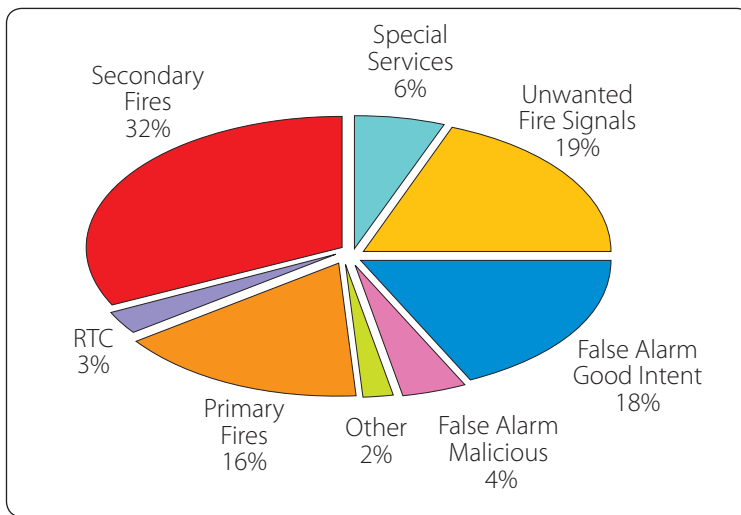
SFR Resources located within East Renfrewshire		Area Commander Craig Cook
2	Wholetime stations	Area Office: East Renfrewshire Area Headquarters 187 Glaisnock Street Cumnock KA18 1JX Telephone: 01290 427610
2	Appliances - 2 x Water tender ladders	
58	Operational staff	
17	Support staff	

Operational profile

This page profiles the incidents responded to by Strathclyde Fire & Rescues East Renfrewshire area over the last 5 fiscal years. The guidance from Communities and Local Government (CLG) uses the last 3 years of data to calculate the average annual economic cost to society of the fire incidents that occurred. Within East Renfrewshire the average cost for the last 3 years is £2,344,169. Details on the breakdown of this cost are shown in the 'Economic cost to society of fire incidents' sections towards the end of this document. Work is ongoing on a UK basis to expand this model to also include the economic cost of RTC and special service incidents.



Breakdown of incidents 2003 - 2008



Distribution of all incidents 2003 - 2008

© Crown copyright.
All rights reserved.
(100020803) (2008)

Breakdown of incidents by service type showing a calculated average based on the previous 4 year fiscal period.

Service Type	Average 2003/04 2006/07	2007/08	Description
Primary fires	172	143	Fires involving property
Secondary fires	349	334	Rubbish, grass, derelict property
RTC	32	31	Road traffic collisions
Special Services (other than RTC)	57	68	Non-fire related rescue work such as, rescue from water, persons trapped, and dealing with hazardous materials
False alarm malicious	43	37	Deliberately causing a false alarm of fire e.g. hoax calls or malicious setting off of fire alarms
False alarm good intent	194	201	A person reports a fire, believing it to be genuine.
Unwanted fire signals	183	258	Calls due to faulty or poorly maintained fire alarm systems
Other	27	17	Special Service (non-emergency), overborder, chimney fires or open hydrants
Total	1,057	1,089	
% of SFR		1.89%	

Casualties, fatalities and rescues

The level of investigation carried out by both fire and police services when a fatality occurs has enabled us to establish that a significant proportion of the 177 who died within all of Strathclyde as a result of fire over the last 5 years (fiscal) have been recorded as being 'impaired with alcohol or drugs'. In these cases, the presence of alcohol or drugs may have affected the ability to detect fire, react and escape from the building.

Casualties, fatalities and rescues in East Renfrewshire from 2003 - 2008



Total casualties, fatalities and rescues by ward for 2003-2008

Ward	Casualties				Fatalities				Rescues				Total
	Total	Fire	RTC	Spec Serv	Total	Fire	RTC	Spec Serv	Total	Fire	RTC	Spec Serv	
Barrhead	84	26	48	10	4	2	1	1	11	3	3	5	99
Busby,Clarkston and Eaglesham	31	3	24	4	2	0	2	0	9	0	0	9	42
Giffnock and Thornliebank	28	4	16	8	1	0	0	1	11	0	1	10	40
Neilston Uplawmoor and Newton Mearns North	57	6	46	5	1	1	0	0	4	0	0	4	62
Netherlee Stamperland and Williamwood	20	3	11	6	0	0	0	0	9	0	0	9	29
Newton Mearns South	36	5	28	3	6	1	5	0	12	0	0	12	54
Total	256	47	173	36	14	4	8	2	56	3	4	49	326

The RTC figures reported represent only those incidents attended by Strathclyde Fire & Rescue.

The tables shown below, and structured throughout this document, detail statistics for all councils within the Strathclyde area and have been constructed to show the occurrences recorded per 10,000 head of population¹.

Fire casualties per 10,000 head of population 2003-2008

Council	2003/4	2004/05	2005/06	2006/07	2007/08
Argyll and Bute	3.0	1.4	2.7	1.5	2.5
East Ayrshire	2.3	2.1	1.9	2.9	1.8
East Dunbartonshire	1.3	1.1	1.6	1.9	2.5
East Renfrewshire	1.7	1.2	0.9	0.8	0.7
Glasgow City	6.4	5.7	4.7	4.8	5.1
Inverclyde	4.0	6.1	4.4	3.7	4.7
North Ayrshire	2.4	2.7	4.3	3.0	2.1
North Lanarkshire	3.2	3.6	2.5	3.1	3.6
Renfrewshire	3.8	3.4	2.3	3.2	2.8
South Ayrshire	3.0	2.3	1.6	2.1	1.3
South Lanarkshire	2.5	2.8	1.7	2.8	3.2
West Dunbartonshire	2.8	3.4	5.3	4.3	3.4

Below SFR average ■ SFR average ■ Above SFR average ■

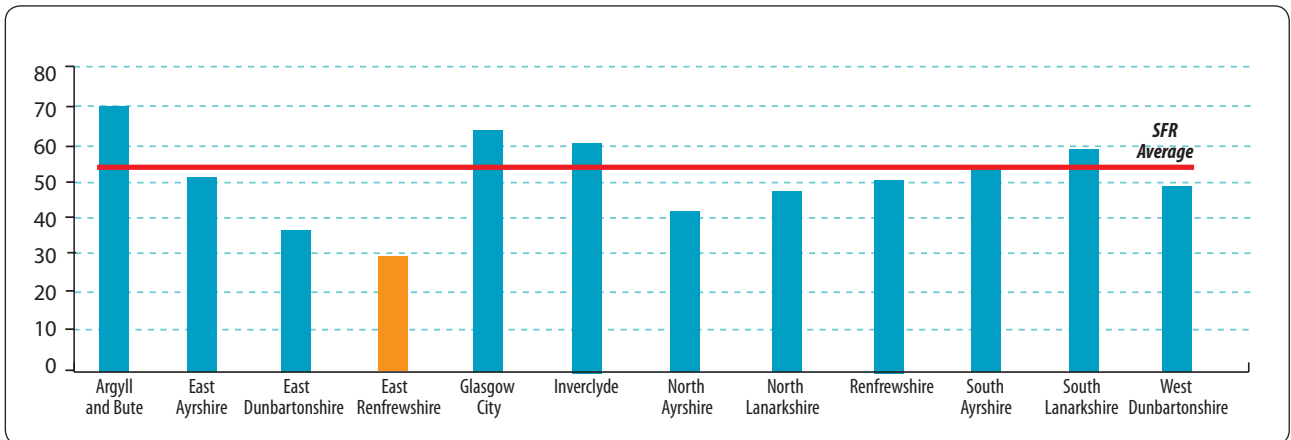
RTC casualties per 10,000 head of population 2003-2008

Council	2003/4	2004/05	2005/06	2006/07	2007/08
Argyll and Bute	10.5	9.6	13.5	11.2	7.3
East Ayrshire	4.3	8.0	4.9	5.8	5.9
East Dunbartonshire	4.7	4.9	3.5	3.5	6.4
East Renfrewshire	4.5	3.8	2.8	3.9	4.4
Glasgow City	4.9	5.2	5.4	4.5	6.2
Inverclyde	7.1	4.8	4.2	5.3	4.4
North Ayrshire	4.4	5.3	3.6	3.8	4.9
North Lanarkshire	4.7	4.8	4.2	5.3	4.6
Renfrewshire	4.6	4.4	4.3	8.3	6.0
South Ayrshire	8.6	5.4	5.4	7.6	8.1
South Lanarkshire	7.1	7.2	6.6	9.1	7.5
West Dunbartonshire	5.0	3.6	3.5	4.4	4.5

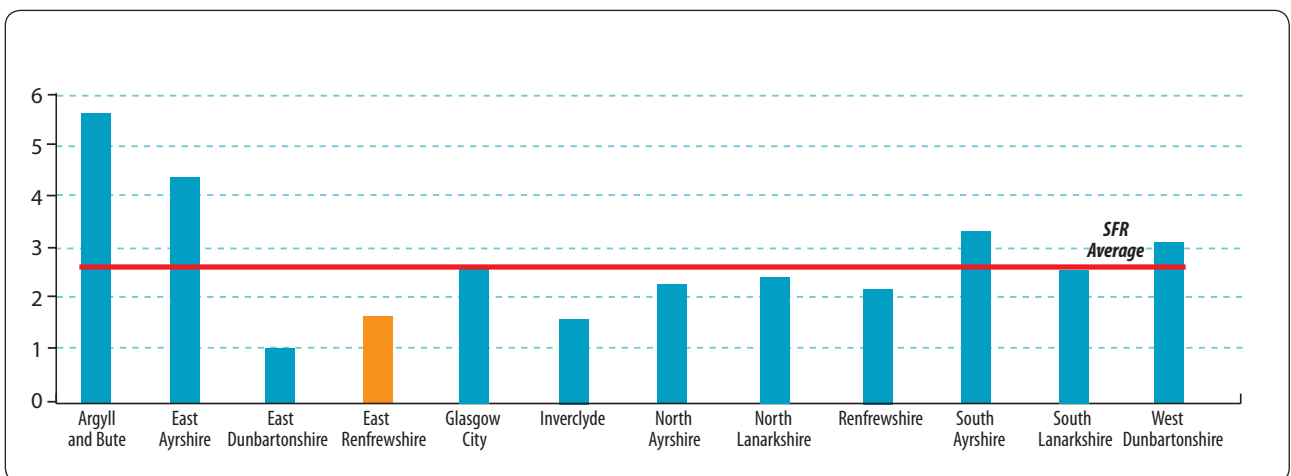
Below SFR average ■ SFR average ■ Above SFR average ■

¹Data that is captured as 'normally distributed' ('SFR Average') has been set within 1 standard deviation of the mean which equates to roughly 70% of all data.

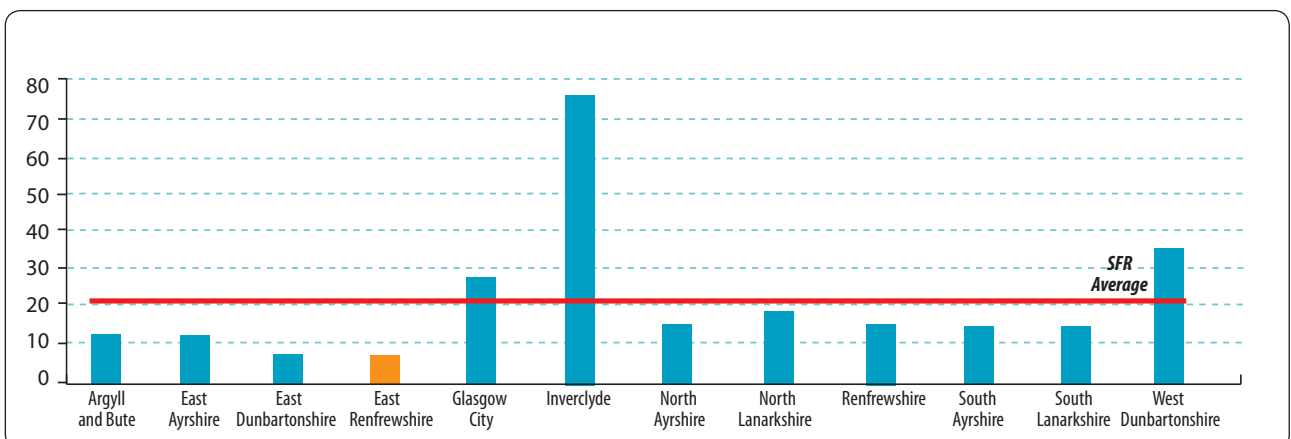
Casualties per 10,000 head of population 2003-2008



Fatalities per 10,000 head of population 2003-2008

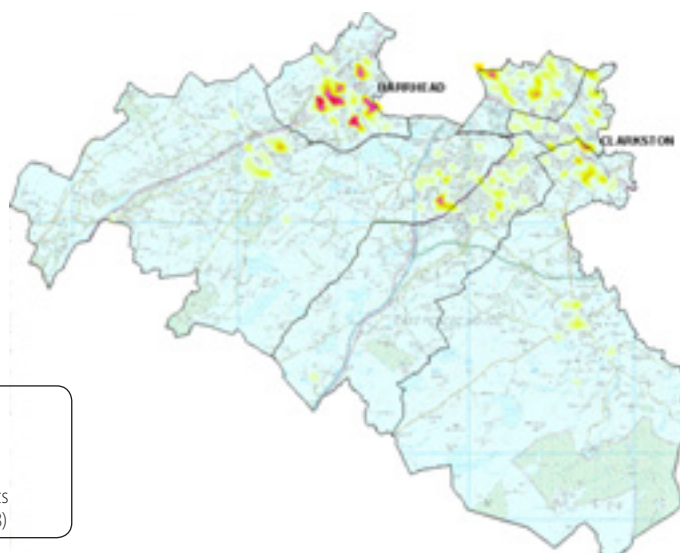


Rescues per 10,000 head of population 2003-2008



Fires in the home

Within East Renfrewshire there were 64 fires in homes during 2007/08, of which 49 were accidental and 15 were deliberate.



**Fires in the home
East Renfrewshire
2003 - 2008**

© Crown copyright. All rights reserved. (100020803) (2008)

Fires in the home by ward 2003-2008

Ward	Total	2003/04	2004/05	2005/06	2006/07	2007/08
Barrhead	182	47	23	34	41	37
Busby, Clarkston and Eaglesham	221	34	45	49	56	37
Giffnock and Thornliebank	127	21	33	33	16	24
Neilston Uplawmoor and Newton Mearns North	87	10	25	13	17	22
Netherlee Stamperland and Williamwood	190	54	20	45	30	41
Newton Mearns South	79	21	17	18	11	12
Total	886	187	163	192	171	173

Fires in the home per 10,000 head of population 2003-2008

Council	2003/4	2004/05	2005/06	2006/07	2007/08
Argyll and Bute	12.5	10.2	10.0	10.2	11.5
East Ayrshire	11.2	9.7	9.5	9.4	9.5
East Dunbartonshire	6.8	8.1	7.5	7.7	7.9
East Renfrewshire	8.6	7.1	8.3	8.7	7.2
Glasgow City	28.0	23.5	23.2	23.1	21.5
Inverclyde	22.2	17.9	17.7	14.3	14.5
North Ayrshire	12.8	12.3	14.3	12.3	11.9
North Lanarkshire	12.6	12.5	11.9	11.3	12.1
Renfrewshire	17.2	13.6	14.6	15.0	15.2
South Ayrshire	12.6	11.1	9.4	9.8	10.6
South Lanarkshire	10.5	9.8	10.2	10.5	10.2
West Dunbartonshire	20.5	17.9	21.0	18.7	19.0

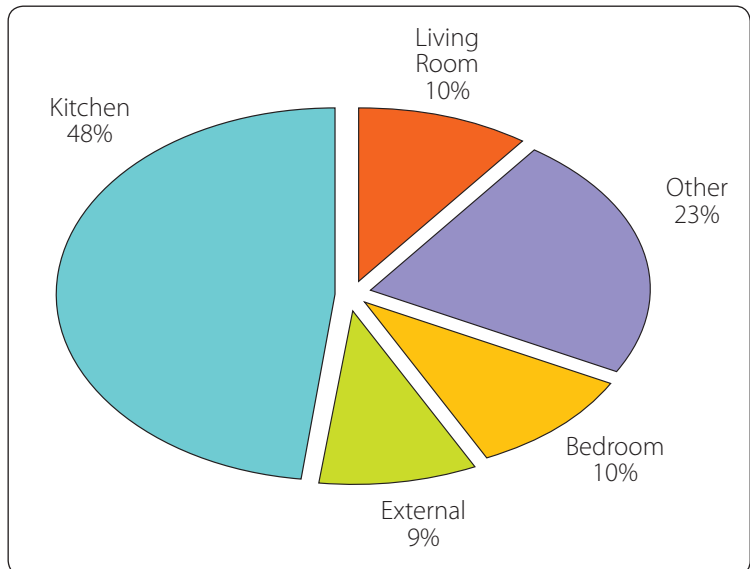
Below SFR average ■ SFR average ■ Above SFR average ■

Room of origin and source of ignition

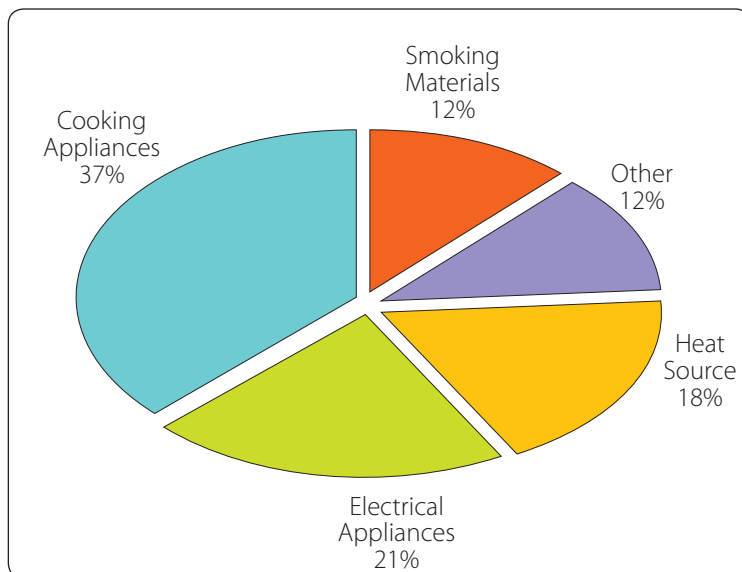
Analysis shows that in the last 5 fiscal years, almost 50% of all fires in East Renfrewshire homes originated in the kitchen.

Strathclyde Fire & Rescue constantly strives to create greater public awareness through campaigns such as 'Back to the Start' (August 2008). The aim of such campaigns is to educate homeowners and tenants about the risks they face from potential house fires.

Room of origin 2003-2008



Source of ignition 2003-2008



During the last 5 fiscal years, more than 60% of fires that occurred in East Renfrewshire homes were (at source) as a result of either 'Smoking Materials' or 'Cooking Appliances'.

Of the incidents that were identified at source of a 'Smoking Materials' or 'Cooking Appliance' nature, there were 3 reported fatalities and 21 casualties.

Community safety in our homes

Home Fire Safety Visits

Strathclyde Fire & Rescue provides a free service for members of the public and offers a home fire safety check. The majority of fires continue to occur in domestic premises and these checks highlight potential fire risks. The visit provides members of the public with quality fire safety advice, which includes fire escape plans, advice on what to do if you discover a fire and other fire safety issues.

The number of East Renfrewshire residents benefiting from the scheme is constantly increasing as a result of campaigns carried out by fire fighters. These campaigns include leafleting areas, hot strikes following incidents and open days in local Community Fire Stations.

It is our intention to ensure that we continue to work in close collaboration with partner agencies, particularly social work and addiction teams to ensure that we target our Home Fire Safety Visits to those most at risk from fire.

The free home safety visit contact number is 0800 0731 999.

Home fire safety visits conducted in the last 3 fiscal years

Ward	Total	2005/06	2006/07	2007/08
Barrhead	375	49	208	118
Busby, Clarkston and Eaglesham	140	56	52	32
Giffnock and Thornliebank	155	3	65	37
Neilston Uplawmoor and Newton Mearns North	201	65	78	58
Netherlee Stamperland and Williamwood	110	3	57	50
Newton Mearns South	39	5	13	21
Total	1,020	231	473	316

Fire sprinkler project

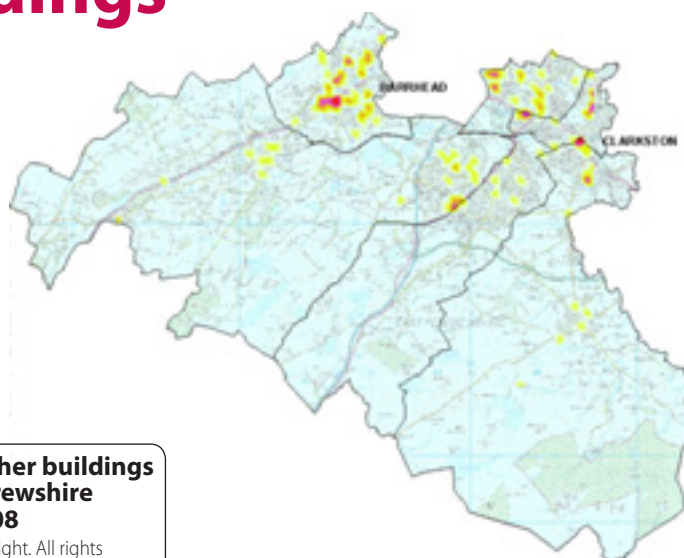
Sprinkler systems have proved very valuable in protecting life in commercial and industrial properties for many years. However the majority of fire fatalities occur in the home and this has led to the introduction of sprinkler systems specifically designed for residential and domestic property.

Provision of fire sprinklers will reduce fire injuries and damage to property and the environment. In partnership with East Renfrewshire council, domestic sprinkler systems have been installed in the homes of vulnerable people and Strathclyde Fire & Rescue will continue to encourage partners in the use of sprinklers to protect homes, businesses and other premises.

Fires in other buildings

Within East Renfrewshire the main non-dwelling fires were in domestic outbuildings, shops, industrial premises and local authority buildings.

Incidents of this nature attributed to 52% of all fires in other buildings throughout the local authority.



**Fires in other buildings
East Renfrewshire
2003 - 2008**
© Crown copyright. All rights reserved. (100020803) (2008)

Fires in other buildings by ward 2003-2008

Ward	Total	2003/04	2004/05	2005/06	2006/07	2007/08
Barrhead	61	13	12	12	13	11
Busby, Clarkston and Eaglesham	22	9	3	2	6	2
Giffnock and Thornliebank	29	8	3	4	7	7
Neilston Uplawmoor and Newton Mearns North	27	7	2	4	4	10
Netherlee Stamperland and Williamwood	17	2	6	1	4	4
Newton Mearns South	6	0	4	0	1	1
Total	162	39	30	23	35	35

Fires in other buildings per 10,000 head of population 2003-2008

Council	2003/4	2004/05	2005/06	2006/07	2007/08
Argyll and Bute	5.1	4.3	5.0	4.9	4.0
East Ayrshire	5.6	4.7	3.7	6.6	3.5
East Dunbartonshire	3.8	3.6	2.7	3.9	4.0
East Renfrewshire	4.4	3.4	2.6	3.9	3.9
Glasgow City	10.0	8.7	9.0	7.7	8.1
Inverclyde	5.5	6.4	9.6	6.4	6.4
North Ayrshire	6.3	5.5	6.2	4.6	5.3
North Lanarkshire	7.4	7.0	6.5	6.2	5.8
Renfrewshire	7.2	8.0	8.1	7.8	7.8
South Ayrshire	5.6	4.7	5.1	5.0	4.5
South Lanarkshire	6.0	5.5	6.0	5.4	6.1
West Dunbartonshire	6.2	5.5	7.0	6.1	7.2

Below SFR average ■ SFR average ■ Above SFR average ■

Fire safety enforcement

Since 1st October 2006, Strathclyde Fire & Rescue has been the enforcing authority for the Fire (Scotland) Act 2005 Part 3 which replaced the 1971 Fire Precautions Act and numerous other pieces of legislation.

Fire certificates are no longer issued as the responsibility for complying with the Fire Safety Regulations rests with the 'duty holder' who may be an owner, occupier or any person who has control of any part of the premises. If there is more than one responsible person then they must all take reasonable steps to work with each other.

Part 3 of the Fire (Scotland) Act 2005 applies to almost all premises with the exception of wholly domestic properties. The act covers nearly every type of building and structures and requires that duty holders must carry out a fire risk assessment that focuses on safety in the event of fire.

Strathclyde Fire & Rescue currently holds records for 34,008 premises that are subject to the provisions of the act. This has been detailed below for the Strathclyde area and a breakdown of premises types for the local authority is available from East Renfrewshire community safety.

Premise Type	Strathclyde
Hospitals	80
Care homes	972
Houses in Multiple Occupation (HMOS)	3,020
Hotels	1,068
Other sleeping accommodation	1,696
Schools	598
Licensed premises	2,746
Shops	8,899
Other premises open to the public	2,123
Factories or warehouses	2,837
Offices	8,654
Other workplaces	79
Other premises	1,236
Total	34,008

Premises such as those providing sleeping accommodation are routinely audited to ensure that they are compliant with legislation and statutory guidance. Strathclyde Fire & Rescue carries out audits under its duties as enforcing authority for the Fire (Scotland) Act 2005 in the following cases:

- *Premises that are considered to be high or very high risk (Sleeping risk process or undertaking)*
- *Premises that have had a risk assessment failure (Post Fire Audit)*
- *Premises that have had a substantiated fire safety complaint*
- *Thematic review of premises of a particular type*

Premises that are identified as high or very high risk will be audited on an annual basis. All other premises will be audited when deemed necessary by risk profiling or when directed by a thematic review of premises type.

Following the legislative change in 2006 there has been a significant increase in the number of premises which require auditing. A great deal of risk assessment work needs to be undertaken to develop a prioritised inspection programme tailored to risk level.

Given the large number of properties that are likely to be inspected each year Strathclyde Fire & Rescue staff will have a great deal of contact with members of the business community. Such contact may offer scope to act on behalf of other local public services.

Audits carried out within East Renfrewshire during 2007/08

Premises risk type	Audits
High or very high	18
Premises which have had a risk assessment failure (post fire audit)	8
Premises that have had a substantiated fire safety complaint	2
Thematic review of premises type	0
Total	28

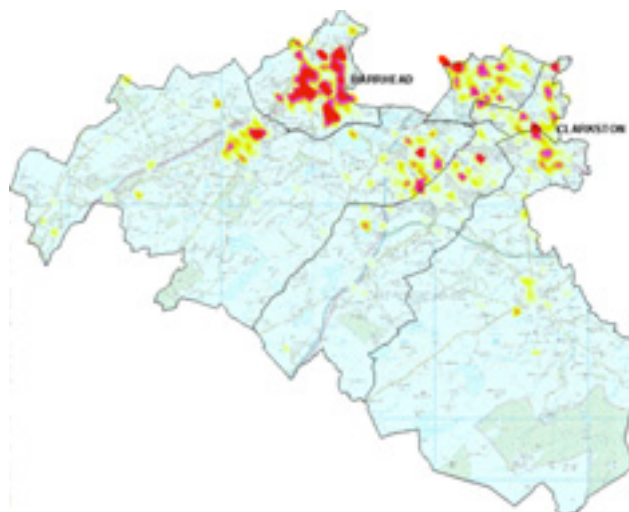
Enforcement notices served following unsatisfactory audits during 2007/08

Type	Served
Prohibition notice	0
Voluntary prohibitions	0
Enforcement notice	1
Prosecutions	0
Notices of deficiencies	15
Total	16

Anti-social behaviour

Fire-related anti-social behaviour within Strathclyde takes 4 main forms; deliberate fire raising, malicious fire calls, open hydrant occurrences and acts of violence. Secondary fires are reportable fires that were not primary fires, did not involve casualties or rescues and were attended by 4 or fewer appliances.

Strathclyde Fire & Rescue believes that there may be a link between the consumption of alcohol or drugs and the types of anti-social behaviour incidents encountered by our staff. Strathclyde Fire & Rescue is keen to work with all relevant agencies to identify contributory factors and to develop initiatives that reduce the level of anti-social behaviour within communities.



**Anti-social behaviour
East Renfrewshire
2003 - 2008**

© Crown copyright. All rights reserved. (100020803) (2008)

Anti-social behaviour incidents by ward 2003-2008

Ward	Total	2003/04	2004/05	2005/06	2006/07	2007/08
Barrhead	1,207	304	224	210	235	234
Busby, Clarkston and Eaglesham	188	55	43	34	27	29
Giffnock and Thornliebank	325	70	57	75	63	60
Neilston Uplawmoor and Newton Mearns North	388	86	81	63	80	78
Netherlee Stamperland and Williamwood	157	36	34	25	35	27
Newton Mearns South	126	29	31	29	16	21
Total	2,391	580	470	436	456	449

Anti-social behaviour incidents per 10,000 head of population 2003-2008

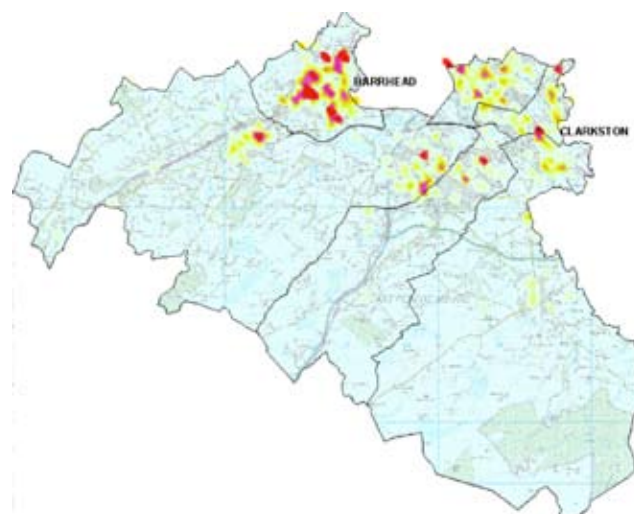
Council	2003/4	2004/05	2005/06	2006/07	2007/08
Argyll and Bute	32.9	25.3	28.7	33.3	27.5
East Ayrshire	128.6	110.4	128.7	112.2	113.7
East Dunbartonshire	52.2	33.1	38.0	40.2	34.7
East Renfrewshire	51.7	41.3	40.8	42.7	42.0
Glasgow City	151.4	113.3	120.6	118.8	109.5
Inverclyde	172.3	132.6	164.7	116.5	105.6
North Ayrshire	138.5	89.7	96.2	97.1	95.7
North Lanarkshire	128.3	85.1	111.6	111.4	111.8
Renfrewshire	135.1	108.8	110.2	90.3	76.7
South Ayrshire	74.4	48.9	59.6	54.0	51.2
South Lanarkshire	90.2	61.9	63.9	73.4	77.9
West Dunbartonshire	143.1	108.3	125.9	131.2	114.4

Below SFR average ■ SFR average ■ Above SFR average ■

Refuse fires

Refuse fires typically include loose rubbish, dust bins, 'wheelie bins', skips, bonfire/refuse burning out of control, fires at FDR1 locations involving solely incendiary devices or flammable liquids.

Incidents of this nature account for around 75% of all secondary fires within the East Renfrewshire area.



Refuse fires for East Renfrewshire 2003 - 2008
© Crown copyright. All rights reserved. (100020803) (2008)

Refuse fires by ward 2003-2008

Ward	Total	2003/04	2004/05	2005/06	2006/07	2007/08
Barrhead	597	144	84	108	126	135
Busby, Clarkston and Eaglesham	94	24	16	23	17	14
Giffnock and Thornliebank	161	33	36	42	28	22
Neilston Uplawmoor and Newton Mearns North	173	29	49	20	34	41
Netherlee Stamperland and Williamwood	86	15	16	16	26	13
Newton Mearns South	60	11	18	14	10	7
Total	1,171	256	219	223	241	232

Refuse fires per 10,000 head of population 2003-2008

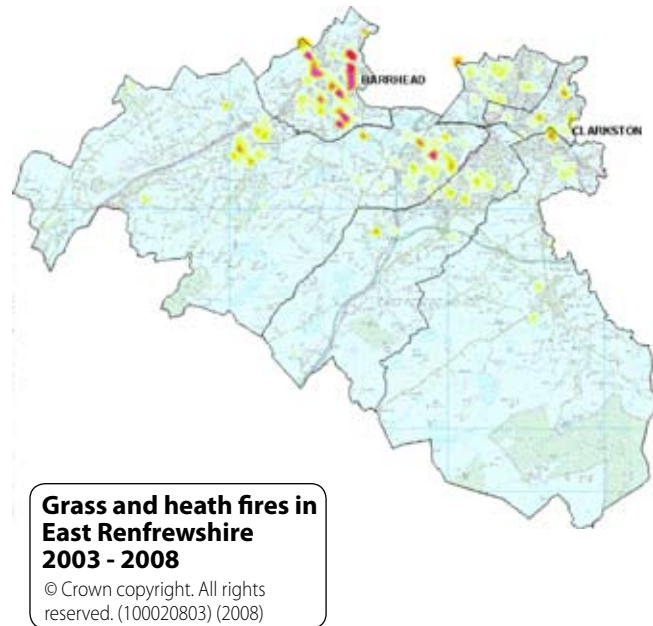
Council	2003/4	2004/05	2005/06	2006/07	2007/08
Argyll and Bute	11.1	10.1	10.6	13.7	12.6
East Ayrshire	59.6	65.3	77.0	69.3	74.4
East Dunbartonshire	26.6	21.0	21.8	22.3	21.3
East Renfrewshire	28.7	24.5	25.0	27.0	26.0
Glasgow City	89.3	71.7	78.3	78.4	73.9
Inverclyde	99.7	75.7	99.0	72.3	68.4
North Ayrshire	65.1	51.1	46.1	53.4	61.0
North Lanarkshire	67.6	52.4	68.7	65.5	71.8
Renfrewshire	73.2	65.8	71.6	58.6	49.1
South Ayrshire	34.4	27.2	31.8	27.0	28.4
South Lanarkshire	50.3	39.9	41.3	47.5	54.3
West Dunbartonshire	76.4	67.5	74.0	82.6	78.0

Below SFR average ■ SFR average ■ Above SFR average ■

Grass and heath fires

Fires on grassland, heathland, peatland, scrub, hedge, open land, railway embankment/cutting, road verge, single tree, straw/stubble incidents other than those reported as 'intentional'. Incidents of this nature would be classed as 'Intentional straw/stubble burning'.

Grass and heath incidents account for almost 20% of all secondary fires within the East Renfrewshire area.



Grass and heath fires by ward 2003-2008

Ward	Total	2003/04	2004/05	2005/06	2006/07	2007/08
Barrhead	176	56	20	23	40	37
Busby, Clarkston and Eaglesham	19	9	3	1	3	3
Giffnock and Thornliebank	27	10	4	3	4	6
Neilston Uplawmoor and Newton Mearns North	100	31	15	16	19	18
Netherlee Stamperland and Williamwood	20	11	5	1	1	2
Newton Mearns South	27	10	2	5	4	6
Total	369	127	49	50	71	72

Grass and heath fires per 10,000 head of population 2003-2008

Council	2003/4	2004/05	2005/06	2006/07	2007/08
Argyll and Bute	13.0	5.6	8.6	9.6	8.8
East Ayrshire	39.7	13.7	23.0	19.0	17.0
East Dunbartonshire	19.5	6.2	10.0	9.8	7.8
East Renfrewshire	14.2	5.5	5.6	8.0	8.1
Glasgow City	18.2	5.6	10.7	7.6	7.3
Inverclyde	40.5	21.7	37.3	22.9	23.1
North Ayrshire	45.3	16.7	24.5	23.0	19.6
North Lanarkshire	38.7	13.1	20.8	25.5	21.5
Renfrewshire	28.2	13.2	13.3	12.7	11.2
South Ayrshire	26.8	11.3	13.0	12.8	10.7
South Lanarkshire	22.6	7.5	8.9	13.0	10.1
West Dunbartonshire	31.2	13.5	22.2	20.6	18.9

Below SFR average ■ SFR average ■ Above SFR average ■

Derelict building fires

Incidents of this nature occur in property that is classed as 'single building under demolition'.



**Derelict building fires
East Renfrewshire
2003 - 2008**

© Crown copyright. All rights reserved. (100020803) (2008)

Derelict building fires by ward 2003-2008

Ward	Total	2003/04	2004/05	2005/06	2006/07	2007/08
Barrhead	90	20	35	19	12	4
Busby, Clarkston and Eaglesham	4	1	2	0	0	1
Giffnock and Thornliebank	12	0	1	3	6	2
Neilston Uplawmoor and Newton Mearns North	4	1	0	1	1	1
Netherlee Stamperland and Williamwood	7	1	0	1	3	2
Newton Mearns South	0	0	0	0	0	0
Total	117	23	38	24	22	10

Derelict building fires per 10,000 head of population 2003-2008

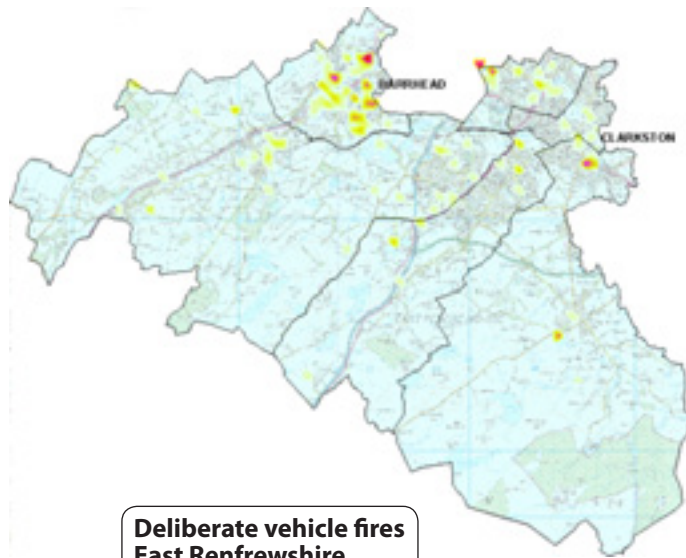
Council	2003/4	2004/05	2005/06	2006/07	2007/08
Argyll and Bute	1.1	1.0	2.2	1.1	0.8
East Ayrshire	4.0	3.4	5.4	2.9	3.0
East Dunbartonshire	0.9	0.7	1.2	1.4	1.5
East Renfrewshire	2.6	4.3	2.7	2.5	1.1
Glasgow City	9.1	6.8	5.7	4.7	4.8
Inverclyde	6.3	5.6	6.0	4.0	3.2
North Ayrshire	1.8	1.3	2.4	1.7	1.3
North Lanarkshire	2.9	2.2	2.2	2.0	2.5
Renfrewshire	12.3	8.8	6.8	3.4	3.6
South Ayrshire	1.5	0.8	1.2	0.4	0.9
South Lanarkshire	2.4	1.8	1.7	1.5	2.4
West Dunbartonshire	6.6	2.8	8.8	8.5	1.9

Below SFR average ■ SFR average ■ Above SFR average ■

Deliberate vehicle fires

Deliberate vehicle fires take into account wilful fire raising affecting both abandoned vehicles and vehicles still in use.

On average over the last 5 fiscal periods, 4% of all Strathclyde deliberate vehicle fires have been reported in East Renfrewshire.



**Deliberate vehicle fires
East Renfrewshire
2003 - 2008**

© Crown copyright. All rights reserved. (100020803) (2008)

Deliberate vehicle fires by ward 2003-2008

Ward	Total	2003/04	2004/05	2005/06	2006/07	2007/08
Barrhead	95	26	28	14	10	17
Busby, Clarkston and Eaglesham	25	11	7	1	3	3
Giffnock and Thornliebank	30	8	5	5	8	4
Neilston Uplawmoor and Newton Mearns North	38	11	7	4	14	2
Netherlee Stamperland and Williamwood	5	1	2	1	0	1
Newton Mearns South	15	4	4	4	0	3
Total	208	61	53	29	35	30

Deliberate vehicle fires per 10,000 head of population 2003-2008

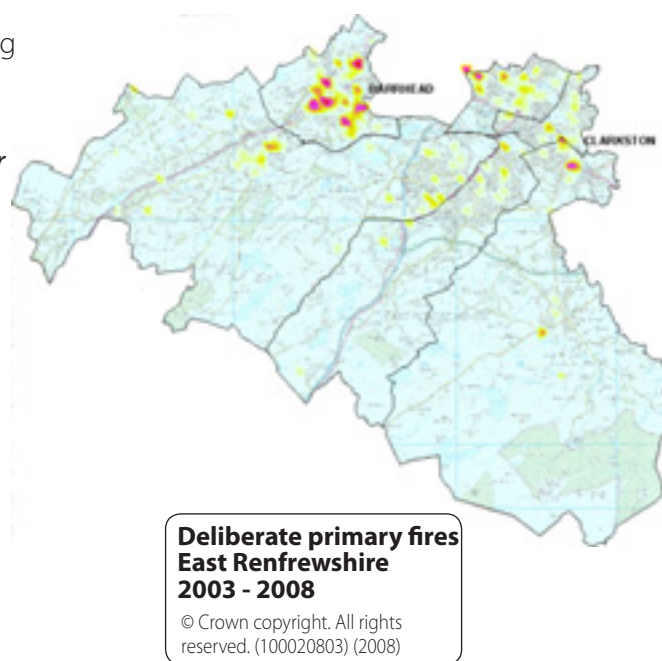
Council	2003/4	2004/05	2005/06	2006/07	2007/08
Argyll and Bute	2.8	2.7	3.3	1.4	1.1
East Ayrshire	12.9	11.0	10.6	8.3	5.5
East Dunbartonshire	6.1	5.9	4.7	6.2	4.2
East Renfrewshire	6.8	5.9	3.2	3.9	3.4
Glasgow City	16.2	12.3	10.8	10.7	7.2
Inverclyde	22.7	15.5	19.0	10.3	10.3
North Ayrshire	11.2	8.9	6.6	6.1	4.9
North Lanarkshire	14.1	12.0	11.1	10.3	7.3
Renfrewshire	10.7	9.5	7.9	7.9	6.2
South Ayrshire	3.9	4.8	3.1	2.3	2.1
South Lanarkshire	10.5	7.5	7.0	7.0	5.8
West Dunbartonshire	18.3	14.6	15.7	11.6	11.5

Below SFR average ■ SFR average ■ Above SFR average ■

Deliberate primary fires

Deliberate primary fires are wilful fire raising incidents affecting property such as:

- Buildings (including mobile homes) fit for occupation or under construction
- Caravans, trailers etc
- Vehicles and other methods of transport (not derelict)
- Outdoor storage, plant and machinery
- Outdoor structures including postboxes, tunnels, bridges etc.



Deliberate primary fires by ward 2003-2008

Ward	Total	2003/04	2004/05	2005/06	2006/07	2007/08
Barrhead	169	39	48	19	27	36
Busby, Clarkston and Eaglesham	39	17	13	2	5	2
Giffnock and Thornliebank	54	12	8	9	12	13
Neilston Uplawmoor and Newton Mearns North	59	16	8	12	15	8
Netherlee Stamperland and Williamwood	18	2	6	3	2	5
Newton Mearns South	20	4	7	3	2	4
Total	359	90	90	48	63	68

Deliberate primary fires per 10,000 head of population 2003-2008

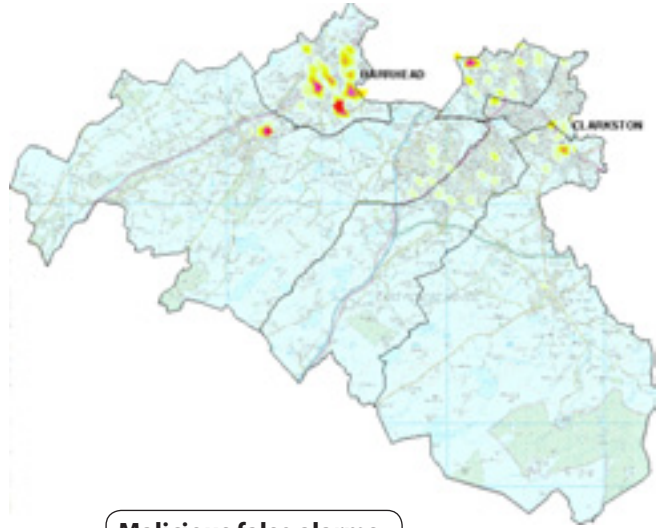
Council	2003/4	2004/05	2005/06	2006/07	2007/08
Argyll and Bute	4.5	4.6	5.0	3.4	3.6
East Ayrshire	14.5	12.5	11.7	11.8	7.1
East Dunbartonshire	8.2	8.0	6.6	9.1	7.6
East Renfrewshire	10.1	10.1	5.4	7.1	7.5
Glasgow City	26.2	21.2	19.1	19.3	14.2
Inverclyde	31.5	23.5	29.1	17.7	17.4
North Ayrshire	16.1	12.0	11.6	9.8	9.2
North Lanarkshire	19.0	17.7	16.8	16.3	12.8
Renfrewshire	19.8	14.7	14.0	14.7	14.2
South Ayrshire	6.4	8.2	6.3	6.1	5.0
South Lanarkshire	15.3	11.1	11.1	10.3	10.1
West Dunbartonshire	25.2	18.9	20.6	17.1	18.6

Below SFR average ■ SFR average ■ Above SFR average ■

Malicious false alarms

Malicious false alarms are fire alarms raised with malicious intent. Strathclyde Fire & Rescue takes the issue of malicious false alarms extremely seriously and has adopted a call challenging policy that is enforced if the call is suspected to be false.

During the last 5 fiscal years, East Renfrewshire has been accountable for 11% of all Strathclyde malicious false alarms.



**Malicious false alarms
East Renfrewshire
2003 - 2008**
© Crown copyright. All rights reserved. (100020803) (2008)

Malicious false alarms by ward 2003-2008

Ward	Total	2003/04	2004/05	2005/06	2006/07	2007/08
Barrhead	122	27	29	35	19	12
Busby, Clarkston and Eaglesham	16	0	5	2	1	8
Giffnock and Thornliebank	32	4	5	7	7	9
Neilston Uplawmoor and Newton Mearns North	21	2	5	4	6	4
Netherlee Stamperland and Williamwood	8	2	1	1	1	3
Newton Mearns South	8	2	1	4	0	1
Total	207	37	46	53	34	37

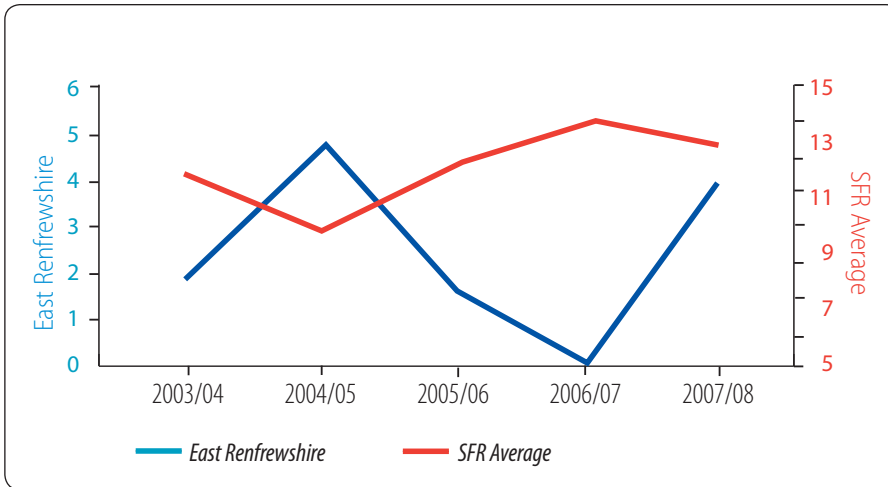
Malicious false alarms per 10,000 head of population 2003-2008

Council	2003/4	2004/05	2005/06	2006/07	2007/08
Argyll and Bute	5.6	6.1	4.7	5.9	3.3
East Ayrshire	18.1	21.8	17.1	15.8	14.9
East Dunbartonshire	2.9	2.3	2.9	4.6	2.7
East Renfrewshire	4.1	5.2	5.9	3.8	4.1
Glasgow City	29.7	25.1	21.2	23.6	20.4
Inverclyde	17.5	24.0	14.3	11.4	7.2
North Ayrshire	21.0	16.4	19.6	15.3	9.7
North Lanarkshire	13.6	13.3	16.0	14.4	12.7
Renfrewshire	17.0	16.0	14.9	12.4	8.8
South Ayrshire	8.7	7.6	11.3	11.2	10.0
South Lanarkshire	11.1	9.8	9.0	7.4	8.4
West Dunbartonshire	21.3	17.5	11.7	11.2	12.3

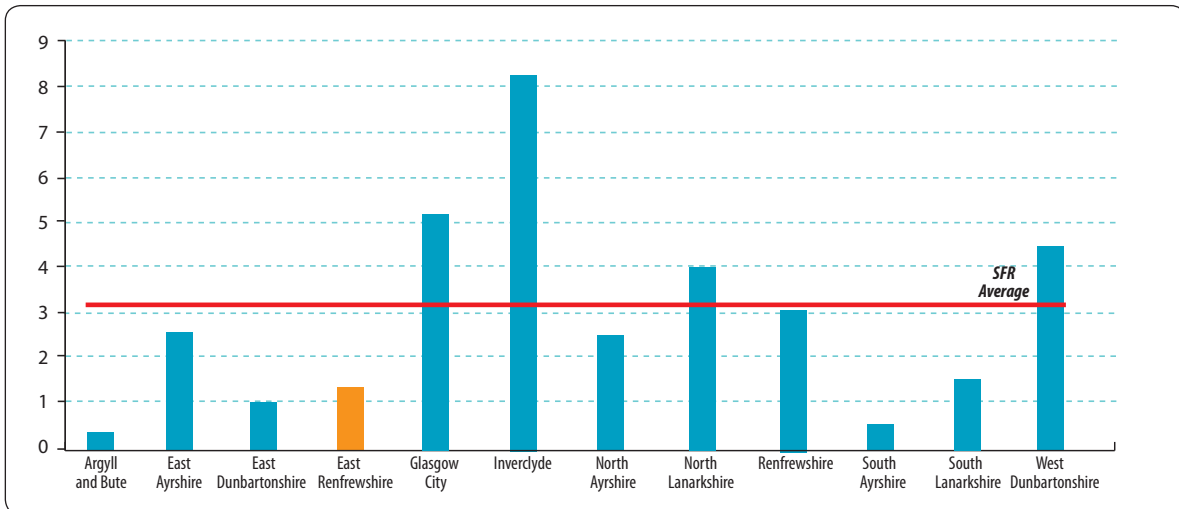
Below SFR average ■ SFR average ■ Above SFR average ■

Acts of violence against firefighters

Recorded acts of violence in East Renfrewshire and Strathclyde average 2003-2008



Acts of violence per 10,000 head of population 2003-2008



Recorded acts of violence (by station) 2003-2008

Station	Total	2003/04	2004/05	2005/06	2006/07	2007/08
Clarkston	6	0	5	1	0	0
Barrhead	7	2	0	1	0	4
Total	13	2	5	2	0	4

Community safety in our schools

Schools education programme

Strathclyde Fire & Rescue has recently developed a corporate Fire Safety for Schools programme. This programme links with the Curriculum for Excellence, assisting in developing successful learners, confident individuals, responsible citizens and effective contributors. The programme is based on a series of short interactive presentations and has 6 key elements. The emphasis is on reducing the chances of fire in the home and on ensuring that children know what to do if a fire occurs.



Pre School/P1/P2 People Who Help Us - Familiarises pupils with the work of the fire fighter, protective clothing and equipment used. Stresses the dangers of playing with fire, covers emergency procedures and the correct actions to take if clothing catches fire.

Stage 1 – P6/7 Fire Safety - Encourages pupils to take on a degree of responsibility for fire safety. Highlights electrical dangers, fire prevention, smoke alarms and fire action plans.

Stage 2 – S1/S2 Fire Safety – Aimed at reducing the number of households at risk of fire through increased awareness of how accidents are caused. Encourages pupils to take on a greater responsibility for the prevention of domestic fires.

Stage 3 - S1/S2 Fire Safety - Encourages pupils to take on a greater degree of responsibility in the event of a fire in their home and to develop fire actions plans.

P6+ Fireworks - Raises awareness of the dangers of bonfires and fireworks.

P5+ Anti-Vandalism - Explains the severe consequences of vandalism, which wastes the time and resources of the fire service.

Experiential learning

Experiential learning events for P6 pupils aim to reduce accidents amongst young people by creating a safe environment where young people can learn to become more aware of personal safety. The events explain how to react to dangerous situations, understand the roles of the emergency services and to make contributions towards reducing both crime and accidents.

The partnership also implements the Safe and Sound at Home experiential learning event aimed at older people in East Renfrewshire.

FIREREACH

FIREREACH is a programme that engages with 12-17 year old youths. The programme is delivered over 5 days at Clarkston fire station. The course aims to increase the self-confidence of young people, involve them in teamwork and improve their communication skills. It has the added benefit of raising awareness of the role of the Fire & Rescue Service and develops a positive relationship between firefighters and young people. In improving citizenship it is hoped completion of the course will help 12-17 year olds to learn self-discipline, work as team leaders, work as part of a team, develop a knowledge and awareness of their community, improve home safety knowledge, learn first aid and develop an understanding in relation to the contribution that the Fire & Rescue Service, along with other agencies make to society. Due to the continued support of the East Renfrewshire community safety partnership the Clarkston FIREREACH programme continues to be the benchmark programme for all Strathclyde FIREREACH programmes.



Community safety in our communities

Danger in the park

Strathclyde Fire & Rescue are core partners in local Community Safety Experiential Learning programmes, including East Renfrewshire's 'Danger in the park'. This initiative is run in partnership with agencies including the Police, British Transport Police, Trading Standards, NHS, alcohol and drug teams and Scottish Power. The children watched a demonstration of what would have happened if a chip pan went on fire. The message is 'get out, stay out, get the fire service out'.

Mobile football pitches

Mobile football matches are used to promote young people's access to sports and physical activity and act as diversionary schemes, which aim to reduce anti-social behaviour related issues. The facilities are targeted at certain areas using incident data to identify activity hotspots. Within East Renfrewshire, Strathclyde Fire & Rescue work in partnership with many other organisations including the Police and leisure services who also contribute funding to deliver this service to actively engage with young people.

Carers presentations

Many of the victims of fire are in the care of, or are known to various caring agencies. It is these agencies that Strathclyde Fire & Rescue are targeting in an attempt to educate the carers so they can identify not only fire risks in the home but the remedial action needed to prevent them. In East Renfrewshire, Strathclyde Fire & Rescue have struck up a valuable partnership with various social work departments and are delivering presentations to highlight the danger of fires in the home along with the home fire and safety visit programme.

Home fire safety visits (HFSV)

Increasing the number of home fire safety visits as a means to drive down domestic fires, reduce fatalities and casualties continues to be a priority for East Renfrewshire community safety. Closer relationships with our partnership organisations will hopefully open the doors to those otherwise hard to reach individuals who are more vulnerable to fire.

Road safety

Road traffic collisions

Strathclyde Fire & Rescue is working towards the development and delivery of road safety education, intervention and response policies in collaboration with local authorities, education, Strathclyde Police, RoSPA and Road Safety Scotland. Such joint working takes full account of Road Policing Strategy and Road Safety Scotland's business plans. Some of these initiatives are discussed on the following page.



**RTCs
East Renfrewshire
2003 - 2008**
© Crown copyright. All rights reserved. (100020803) (2008)

RTCs by ward 2003-2008

Ward	Total	2003/04	2004/05	2005/06	2006/07	2007/08
Barrhead	47	7	12	7	9	12
Busby, Clarkston and Eaglesham	25	7	7	3	5	3
Giffnock and Thornliebank	18	2	3	1	5	7
Neilston Uplawmoor and Newton Mearns North	37	7	11	6	9	4
Netherlee Stamperland and Williamwood	7	3	1	1	1	1
Newton Mearns South	24	9	5	5	1	4
Total	158	35	39	23	30	31

RTCs per 10,000 head of population 2003-2008

Council	2003/4	2004/05	2005/06	2006/07	2007/08
Argyll and Bute	9.3	9.7	11.3	10.8	10.4
East Ayrshire	5.1	8.6	6.6	7.6	8.2
East Dunbartonshire	3.9	4.2	3.1	3.9	4.6
East Renfrewshire	3.9	4.4	2.6	3.4	3.5
Glasgow City	4.3	4.7	5.0	4.9	6.1
Inverclyde	3.7	4.3	3.4	4.3	5.6
North Ayrshire	4.9	6.3	5.0	6.2	6.6
North Lanarkshire	4.7	4.8	4.9	4.5	5.3
Renfrewshire	3.8	6.0	5.7	8.1	7.9
South Ayrshire	6.4	5.3	5.7	5.7	6.7
South Lanarkshire	5.9	6.7	7.0	7.8	8.0
West Dunbartonshire	3.2	4.3	5.5	5.8	5.8

Below SFR average ■ SFR average ■ Above SFR average ■

Community safety on our roads

Cut It Out – road safety

Strathclyde Fire & Rescue runs a corporate 'Cut it Out' Road Safety Programme. This multi-agency project aims to reduce the numbers killed or seriously injured on Strathclyde roads. This aim will be achieved by working in partnership with other public bodies to educate road users and engage vulnerable groups and through contribution to the wider road safety agenda. This programme is aimed at 5th/6th year High School pupils who may be learning to drive, thinking about learning or are already driving. Pupils are shown a presentation giving facts and figures about road accidents, careless and dangerous driving and are shown adverts from around the world on this subject. The Officers also bring a car wreck along to the school for pupils to see. It is important to obtain feedback from those pupils who attended the event to gauge its value, impact and continuation of the work.

'Cut it Out' costs approximately £4 per student in the 1st year and £1 per student in the following years. The project set up cost includes the purchase of a car, trailer, laptop, data projector, CD Player and number plates (approximately £2858). Should the facility not already exist, areas also require a towing vehicle (approximately £13,000 plus £400 per year maintenance). Staff for the event cost £247.75 per session.



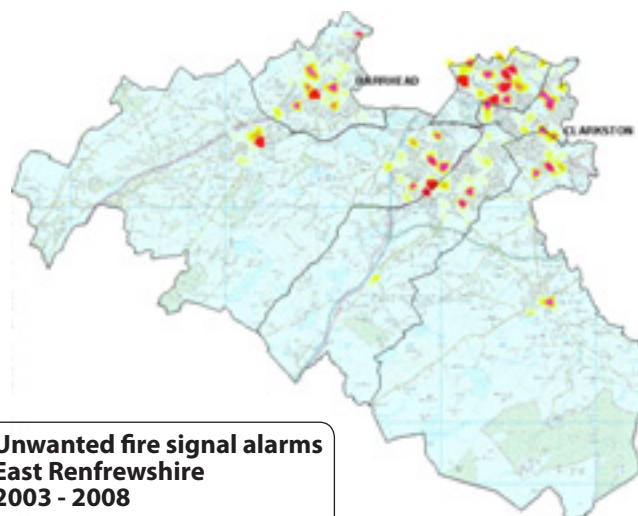
Pass Plus

Pass Plus programmes allow newly qualified drivers to enhance their driving skills by taking extra driving tuition to focus on areas such as motorway or foul weather driving. With the aim of making young drivers safer, community safety partnerships provide funding for young people to take part in these courses. The programme cost per young person participating in the scheme (17 – 25 year olds) is £100.

Unwanted fire alarm signals

An unwanted fire alarm signal can be described as, 'a fire signal resulting from a cause other than fire'. The number of these alarms attended by Strathclyde Fire & Rescue continues to increase year on year and currently stands at over 15,000 annually.

The number reported through East Renfrewshire during 2007/08 equated to 6% of the Strathclyde Fire & Rescue total.



**Unwanted fire signal alarms
East Renfrewshire
2003 - 2008**
© Crown copyright. All rights reserved. (100020803) (2008)

Unwanted fire alarm signals by ward 2003-2008

Ward	Total	2003/04	2004/05	2005/06	2006/07	2007/08
Barrhead	181	45	38	19	33	46
Busby, Clarkston and Eaglesham	89	16	13	14	19	27
Giffnock and Thornliebank	326	70	69	38	66	83
Neilston Uplawmoor and Newton Mearns North	237	40	37	40	59	61
Netherlee Stamperland and Williamwood	93	23	12	18	22	18
Newton Mearns South	65	10	7	7	18	23
Total	991	204	176	136	217	258

Unwanted fire alarm signals per 10,000 head of population 2003-2008

Council	2003/4	2004/05	2005/06	2006/07	2007/08
Argyll and Bute	43.5	49.0	42.9	58.9	60.8
East Ayrshire	28.4	34.6	33.2	33.8	51.6
East Dunbartonshire	24.4	29.1	25.6	30.1	31.4
East Renfrewshire	22.8	19.7	15.2	24.3	28.9
Glasgow City	104.2	113.5	107.9	104.4	114.4
Inverclyde	38.5	49.1	45.6	47.2	49.2
North Ayrshire	34.8	34.9	39.6	50.5	48.3
North Lanarkshire	32.3	34.7	40.9	41.6	46.7
Renfrewshire	49.6	51.4	54.2	58.9	56.5
South Ayrshire	47.2	45.8	45.8	60.4	53.0
South Lanarkshire	37.6	38.9	37.3	61.2	68.1
West Dunbartonshire	38.8	45.4	43.0	45.6	43.5

Below SFR average ■ SFR average ■ Above SFR average ■

Other incidents

False alarm - good intent

'False alarm good intents' occur when a person mistakenly reports a fire, believing it to be genuine. In East Renfrewshire these incidents accounted for 21% of all turnouts in 2007/08. Such calls are not discouraged, as there are usually sufficient grounds for suspecting that a fire has occurred. Strathclyde Fire & Rescue would prefer to receive early notice of a potential fire to allow effective intervention on those occasions when our services are required.

False alarm good intent incidents per 10,000 head of population 2003-2008

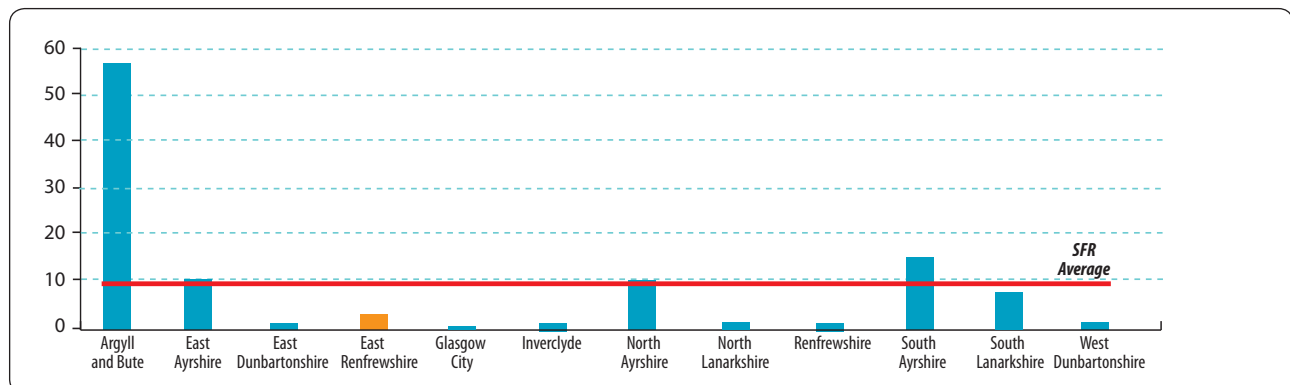
Council	2003/4	2004/05	2005/06	2006/07	2007/08
Argyll and Bute	46.7	45.2	54.4	52.5	49.6
East Ayrshire	27.6	26.4	32.8	46.4	41.9
East Dunbartonshire	18.8	19.1	19.6	22.3	24.8
East Renfrewshire	20.7	21.5	22.5	22.1	22.5
Glasgow City	56.4	56.4	59.0	63.9	56.4
Inverclyde	31.5	41.0	44.8	42.1	41.7
North Ayrshire	30.3	35.3	36.3	37.1	38.2
North Lanarkshire	42.8	46.8	49.4	49.7	48.5
Renfrewshire	49.5	55.3	55.1	51.4	51.2
South Ayrshire	34.2	32.9	34.1	37.8	25.7
South Lanarkshire	52.7	46.3	47.6	27.8	22.6
West Dunbartonshire	40.2	33.1	33.6	43.8	36.9

Below SFR average ■ SFR average ■ Above SFR average ■

Chimney fires

East Renfrewshire experienced 31 chimney fires since 2003/04, which equates to only 2% of all those reported throughout the whole of Strathclyde.

Chimney fires per 10,000 head of population 2003-2008



Special services

Special service incidents are broken down into emergency and non-emergency incidents. Emergency incidents are classified as those where there may be a threat to life or property, whilst non-emergency refers to incidents where there is no such risk.

During the last 5 fiscal years 8 types of special service incidents have accounted for more than 80% of all special service turnouts. A summary of these has been provided below.

Special service incidents throughout Strathclyde 2003 - 2008

Council	Total special service incidents	Person rescue / release	Lift release	Spills and leaks	Effecting entry	Water removal / provision	Making safe	Animal rescue	Assist amb / social service
Argyll and Bute	415	80	33	56	25	106	35	25	55
East Ayrshire	446	130	13	63	38	87	30	35	50
East Dunbartonshire	244	43	18	51	42	29	20	30	11
East Renfrewshire	211	61	8	35	30	24	19	22	12
Glasgow City	4,328	885	749	692	911	368	387	175	161
Inverclyde	772	117	339	104	75	52	38	21	26
North Ayrshire	539	149	34	71	59	107	41	49	29
North Lanarkshire	1,192	270	187	203	121	164	106	52	89
Renfrewshire	750	162	64	145	150	79	73	41	36
South Ayrshire	498	122	72	80	42	45	52	62	23
South Lanarkshire	1,086	267	97	202	141	124	124	82	49
West Dunbartonshire	570	110	187	70	68	57	32	28	18
Strathclyde Total	11,051	2,396	1,801	1,772	1,702	1,242	957	622	559

Economic cost to society of fire incidents

Type of property		Cost per event (2007 prices)	Baseline period			Average number of events per year	Average cost per event per year	Average cost per type of property per year
			2005/06	2006/07	2007/08			
Dwellings	Fatalities	£1,546,688	0	1	0	0.3	£515,563	Dwellings £1,319,581
	Non fatal injury involving burns	£174,354	0	1	1	0.7	£116,236	
	Non fatal injury involving overcome by smoke or fumes	£44,019	1	0	4	1.7	£73,365	
	Other (precautionary check ups, physical injury)	£574	6	3	1	3.3	£1,913	
	Fires (property damage)	£8,507	74	78	64	72.0	£612,504	
Commercial property	Fatalities	£1,546,688	0	0	0	0.0	£0	Commercial property £470,733
	Non fatal injury involving burns	£174,354	0	0	0	0.0	£0	
	Non fatal injury involving overcome by smoke or fumes	£44,019	0	0	0	0.0	£0	
	Other (precautionary check ups, physical injury)	£574	0	0	0	0.0	£0	
	Fires (property damage)	£33,624	11	12	19	14.0	£470,733	
Public sector building	Fatalities	£1,546,688	0	0	0	0.0	£0	Public sector property £71,330
	Non fatal injury involving burns	£174,354	0	0	0	0.0	£0	
	Non fatal injury involving overcome by smoke or fumes	£44,019	0	0	0	0.0	£0	
	Other (precautionary check ups, physical injury)	£574	0	0	0	0.0	£0	
	Fires (property damage)	£30,570	3	3	1	2.3	£71,330	
False alarms all property	False alarms	£848	390	448	496	444.7	£377,077	False alarms, all property £377,077
Vehicle fires	Fatalities	£1,546,688	0	0	0	0.0	£0	Vehicles £105,449
	Non fatal injury involving burns	£174,354	0	0	0	0.0	£0	
	Non fatal injury involving overcome by smoke or fumes	£44,019	0	0	0	0.0	£0	
	Other (precautionary check ups, physical injury)	£574	1	2	0	1.0	£574	
	Fires (property damage)	£2,458	44	50	34	42.7	£104,875	
Outdoor fires	Fatalities	£1,546,688	0	0	0	0.0	£0	Outdoor fires £0
	Non fatal injury involving burns	£174,354	0	0	0	0.0	£0	
	Non fatal injury involving overcome by smoke or fumes	£44,019	0	0	0	0.0	£0	
	Other (precautionary check ups, physical injury)	£574	0	0	0	0.0	£0	
Total cost							£2,344,169	

SFR capability

Local, regional and Scottish resilience

Strathclyde Fire & Rescue is classified as a Primary Responder for the purposes of the Civil Contingencies Act 2004. The act requires the preparation of a Community Risk Register. The purpose of the Community Risk Register is to inform communities of a range of potentially disruptive events that responder agencies have considered and to confirm their state of preparedness to deal with the occurrence of such emergencies and for achieving a swift return to normality. The register provides the basis for the responder agencies to develop, implement and confirm emergency plans.

An 'emergency' is defined in the act as 'an event or situation which threatens serious damage to human welfare in a place in the UK, the environment of a place in the UK, or war or terrorism which threatens serious damage to the security of the UK'.

The inclusion of a particular risk in the Community Risk Register should not be taken to indicate an expectation that the risk will be realised as risk assessments are made on a worst case scenario basis and applied to identified hazards or threats within the Strathclyde area.

The Strathclyde Emergencies Co-ordinating Group

A co-ordinated approach to planning for potential civil emergencies within the Strathclyde area is maintained via the Strathclyde Emergencies Co-ordinating Group in accordance with the Civil Contingencies Act 2004 and associated guidance.

New Dimensions

There are 6 aspects of New Dimensions:

- *Mass Decontamination (Operational)*
- *Urban Search and Rescue (Operational)*
- *Water (Operational)*
- *Command and Control (Enabling)*
- *Operational Logistics (Enabling)*
- *Long-term Capability Management (Enabling)*

The Water aspect covers, high volume pumping, water rescue and water safety.

The New Dimensions project is funded by the Government and has provided equipment for Mass Decontamination Units (MDU) and Urban Search and Rescue (USAR). All Scottish fire and rescue services have been supplied with Mass Decontamination and Urban Search and Rescue equipment.



Strathclyde Fire & Rescue is well equipped to deal with the more unusual and larger events that could have massive impact on any of the communities in Strathclyde. The 3 Major Incident Units (MIU), based within Strathclyde are able to, interchangeably, carry Mass Decontamination or Urban Search and Rescue equipment. Strathclyde is also equipped with a High Volume Pumping (HVP) Unit, which is capable of pumping water up to 3km. The unit will be used for moving large volumes of water from flooding or for firefighting purposes.

Personnel trained in Urban Search and Rescue techniques are available within Strathclyde Fire & Rescue and we are rapidly increasing those numbers through our Technical Rescue Training Centre. This facility also provides training in rescue from Road Traffic Collisions.

The New Dimensions programme is embedded within Scotland’s multi-agency emergency management arrangements being delivered and coordinated within a national Scottish Emergency Co-ordination Committee (SECC) and local Strategic Co-ordination Group (SCG) structure.

The 12 local authorities within our area benefit from the full alignment of Strathclyde Strategic Co-ordination Group, Strathclyde Police and Strathclyde Fire & Rescue.

In parallel with the National Co-ordination Centre (NCC), Scotland has established a Scottish Co-ordination Centre (SCC) managed by Strathclyde Fire & Rescue. The SCC will support a range of specialist services and functions, in addition to chemical, biological, radiological and nuclear (CBRN) capabilities as follows:

Specialist Service	Resources
Urban search and rescue	5 Major Rescue Units, 5 USAR Pod units
Mass decontamination	8 MD4 units
Detection, identification and monitoring	4 units
High volume pumps	4 units
Environmental protection	8 POD units
Working at height	3 specialist teams
Flood support	10 Level 2 water rescue boat units
Wildfire	Resourcing allocation work in progress

Water rescue capability

Strathclyde Fire & Rescue is equipped to undertake work involving rescue from non-tidal waterways. Facilities are strategically located around the Strathclyde area at Ayr, Knightswood, Motherwell, Renfrew and Polmadie fire stations. This rescue capability is available for incidents in any of the 12 local authority areas.

Maritime incident response

Strathclyde Fire & Rescue has a declared resource for dealing with offshore emergency incidents. The Maritime Incidents Response Group supports maritime resilience by delivering a formal approach to dealing with incidents of fire, chemical release and industrial accidents on vessels/structures 'at sea'. This facility, based at Greenock fire station, is provided as part of a partnership between the Maritime and Coastguard Agency (MCA) and 15 coastal Fire & Rescue Services around the UK.

Incident, Research and Investigation Section (IRIS)

Strathclyde Fire & Rescue provides a central Incident Research & Investigation Section, which deals with Fire Investigation, Road Safety, Road Traffic Collision Research and Deliberate Fire-raising Reduction. The Section is equipped with a Fire Investigation Unit which allows the investigation role to be carried out anywhere within the Strathclyde area.



Technical support

Strathclyde Fire & Rescue maintains a specialised emergency response Technical Support Team for dealing with incidents involving hazardous materials. The team includes professional chemists from Glasgow Scientific Services (Scientific Advisors) who maintain 24-hour availability to assist incident managers by providing advice and guidance on how situations such as spillages might be rendered safe or how other incidents involving hazardous materials can be resolved without endangering the public or emergency service staff.

The Scientific Advisors are supported by a highly trained team of Group Commanders who work closely with the Scientific Advisor by assisting with testing and analysis of materials and converting technical advice received into practical actions that can be applied by Incident Commanders. A specialised Technical Support Unit is available to the team wherever it may be required within the Strathclyde area. This unit provides mobile laboratory facilities along with an array of sophisticated sampling, testing and control equipment.

Local presence

We have a presence in 12 local authority areas and our staff are in regular contact with citizens through the activities shown below. We are hopeful of opportunities for collaborative or joint working to be identified from this information.

- *Home Fire Safety Visits*
- *Community Safety Education talks, lectures, demonstrations, etc.*
- *Fire safety awareness training*
- *Youth engagement initiatives*
- *Recruitment campaigns*
- *Attendance at emergency incidents*
- *Familiarisation visits to high risk premises*
- *Fire Safety enforcement inspections and visits*
- *Goodwill fire safety inspections*
- *Fire station open days*
- *Community Safety road shows*

Reference documents

- East Renfrewshire Strategic Assessment 2008
- Strategic Assessment for East Renfrewshire based on analysis of incidents statistics of 2006 and 2007, published May 2008
- Area Service Plan
<http://www.strathclydefire.org/pdfs/ppr/EastRenfrewshireAreaPlan2007-10.pdf>
- Vision 2015 – ‘Making communities safe places to live, work and visit’
http://www.strathclydefire.org/pdfs/ppr/vision_2015_A5.pdf
- IRMP - Integrated Risk Management Plan <http://www.fbu.org.uk/workplace/irmp/irmpdoc/index.php>
- East Renfrewshire Single Outcome Agreement



making our communities safe places to live, work and visit